

# Track Slides

## Internal Slug Slides - Plastic

- ▲ Injection moulded in nylon 66.
- ▲ A019 injection moulded in nylon 6.



Part No.	Diameter: mm/in		Waist: mm/in		Length: mm/in		Pack Qty
A016	7.9	$\frac{5}{16}$	3.0	$\frac{1}{8}$	27.0	$1\frac{1}{16}$	100
A017	9.3	$\frac{3}{8}$	3.0	$\frac{1}{8}$	27.0	$1\frac{1}{16}$	100
A018	12.5	$\frac{1}{2}$	3.0	$\frac{1}{8}$	27.0	$1\frac{1}{16}$	100
A019	14.0	$\frac{9}{16}$	3.0	$\frac{1}{8}$	25.0	1	100

## Slug Slides with Welded Stainless Steel Bail

- ▲ Moulded-in welded bail gives maximum strength.



Part No.	Diameter: mm/in		Waist: mm/in		Length: mm/in		Pack Qty
A016S	6.9	$\frac{9}{32}$	2.5	$\frac{3}{32}$	27.0	$1\frac{1}{16}$	100
A017S	8.1	$\frac{5}{16}$	2.5	$\frac{3}{32}$	27.0	$1\frac{1}{16}$	100
A019S	10.0	$\frac{13}{32}$	3.4	$\frac{1}{8}$	30.0	$1\frac{1}{16}$	100
A018S	11.0	$\frac{7}{16}$	3.4	$\frac{1}{8}$	30.0	$1\frac{3}{16}$	100

## Internal Slug Slides - Stainless Steel

- ▲ Cast Stainless Steel, electro-polished.
- ▲ Low friction PTFE coating.



Part No.	Diameter: mm/in		Waist: mm/in		Length: mm/in		Pack Qty
B035	8.0	$\frac{5}{16}$	3.5	$\frac{5}{32}$	37.0	$1\frac{7}{16}$	10
B036	8.6	$\frac{5}{16}$	3.5	$\frac{5}{32}$	37.0	$1\frac{7}{16}$	10
B037	11.0	$\frac{7}{16}$	3.5	$\frac{5}{32}$	37.0	$1\frac{7}{16}$	10

## Heavy Duty Slug Slides with Moulded-in Bail

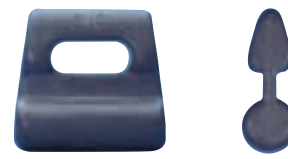
- ▲ Injection moulded in low-friction nylon, with captive stainless steel bail.
- ▲ A031C is designed for modern dinghy booms with very narrow groove openings.
- ▲ Also used for mainsail tack to give close-in attachment of sail to mast.



Part No.	Diameter: mm/in		Waist: mm/in		Length: mm/in		Pack Qty
A031C	8.0	$\frac{5}{16}$	1.7	$\frac{1}{16}$	50.0	2	10
A031	8.0	$\frac{5}{16}$	3.0	$\frac{1}{8}$	50.0	2	10
A032	9.3	$\frac{3}{8}$	3.0	$\frac{1}{8}$	50.0	2	10
A032L	9.3	$\frac{3}{8}$	4.0	$\frac{5}{32}$	75.0	3	10
A033	12.5	$\frac{1}{2}$	4.0	$\frac{5}{32}$	75.0	3	10

## Internal Slug Slides - Cast Alloy

- ▲ Diecast in aluminium alloy and coated with teflon.



B101



B102



B103

Part No.	Diameter: mm/in		Waist: mm/in		Length: mm/in		Pack Qty
B101	11.1	$\frac{7}{16}$	2.5	$\frac{3}{32}$	31.0	$1\frac{1}{4}$	10
B102	11.1	$\frac{7}{16}$	4.0	$\frac{5}{32}$	73.0	$2\frac{7}{8}$	10
B103	12.0	$\frac{15}{32}$	4.0	$\frac{5}{32}$	78.0	$3\frac{1}{8}$	10

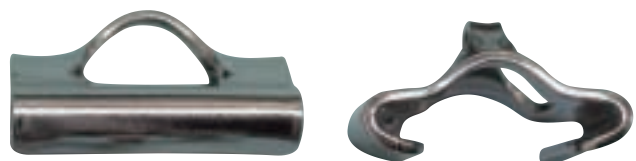
## Heavy Duty Slug Slides - Stainless Steel

- ▲ Diecast in stainless steel, electro-polished.
- ▲ Low friction PTFE coating.



Part No.	Diameter: mm/in		Waist: mm/in		Length: mm/in		Pack Qty
B011	8.0	$\frac{5}{16}$	3.0	$\frac{1}{8}$	75	3	10
B012	10.0	$\frac{3}{8}$	3.0	$\frac{1}{8}$	75	3	10
B013	12.3	$\frac{1}{2}$	3.0	$\frac{1}{8}$	75	3	10

## External Slides - Stainless Steel



Part No.	Track Size: mm/in		Pack Qty
B014SS	15.0	$\frac{5}{8}$	100
B015SS	22.2	$\frac{7}{8}$	100
B016SS	25.1	1	100