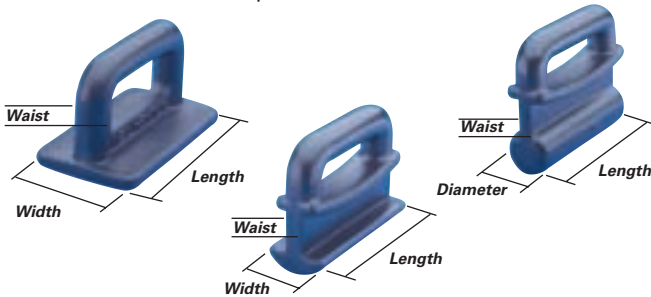


Track Slides

Track Slide Measurements

Bainbridge International's track slides have been carefully designed to allow compatibility with the widest possible range of mast sections. Design and material selection leads to trouble-free use and maximum strength even under the most arduous conditions. High strength metal slides are also available for each type of track to be used in the more highly stressed head and clew positions.



Internal Flat Slides - Plastic

▲ Injection moulded from nylon 66.



Part No.	Width: mm/in	Waist: mm/in	Length: mm/in	Pack Qty
A007	15.8 ⅝	6.8 ¼	30.0 1 ⅞	100
A008	19.0 ¾	9.0 ⅜	33.0 1 ⅞	100
A009	22.2 ⅞	11.0 ⅞	35.0 1 ⅞	100

Internal Flat Slides - Stainless Steel

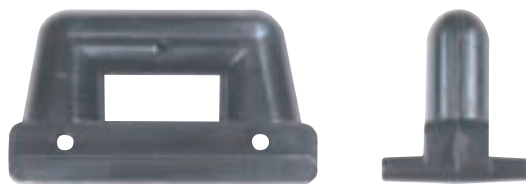
▲ Cast Stainless Steel, electro-polished.
▲ Low friction PTFE coating.



Part No.	Width: mm/in	Waist: mm/in	Length: mm/in	Pack Qty
B307	16.0 ⅝	7.0 ¼	40.0 1 ⅞	10
B308	20.0 ¾	7.0 ¼	40.0 1 ⅞	10
B309	22.0 ⅞	7.0 ¼	40.0 1 ⅞	10

Proctor Mast Slides

▲ Cast stainless steel encapsulated in low friction injection moulded nylon.



Part No.	Width: mm/in	Waist: mm/in	Length: mm/in	Pack Qty
B008	21.0 ⅞	10.0 ⅜	50.0 2	10
B009	24.0 1 ⅞	11.0 ⅞	50.0 2	10
B010	30.0 1 ⅞	16.0 ⅞	50.0 2	10

Selden Mast Slides - Plastic

▲ A011 and A012 are designed for Selden's new range of sections.



A011/A012

A013/A014/A015

Part No.	Width: mm/in	Waist: mm/in	Length: mm/in	Pack Qty
A011	20 ⅞	8.5 ⅞	30.0 1 ⅞	100
A012	20 ⅞	8.5 ⅞	40.0 1 ⅞	10
A013	11.0 ⅞	3.0 ⅞	22.0 ⅞	100
A014	14.0 ⅞	4.0 ⅞	30.0 1 ⅞	100
A015	15.0 ⅞	4.0 ⅞	40.0 1 ⅞	10

Selden Mast Slides - Stainless Steel

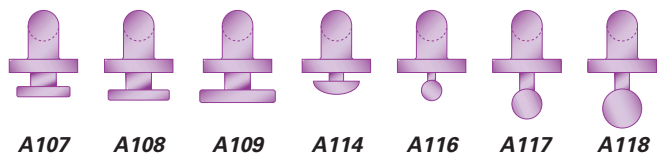
▲ Cast Stainless Steel, electro-polished.
▲ Low friction PTFE coating.



Part No.	Width: mm/in	Waist: mm/in	Length: mm/in	Pack Qty
B044	14.0 ⅞	4.0 ⅞	37.0 1 ⅞	10

Allslip Internal Low Friction Slides

▲ Manufactured from low friction nylon plastic alloy.
▲ Overall length of 45mm gives good bearing surface.
▲ Positive location in mast groove for free running in compression and tension.
▲ A114 is specially designed for use in Selden Mast Sections fitted with flush gates.



Part No.	Width: mm/in	Waist: mm/in	Length: mm/in	Pack Qty
A107	15.8 ⅞	7.0 ¼	45.0 1 ⅞	10
A108	19.0 ¾	9.0 ⅜	45.0 1 ⅞	10
A109	22.2 ⅞	11.0 ⅞	45.0 1 ⅞	10
A114	15.6 ⅞	4.4 ⅞	45.0 1 ⅞	10
A116	8.0 ⅞	4.0 ⅞	45.0 1 ⅞	10
A117	9.3 ⅞	4.0 ⅞	45.0 1 ⅞	10
A118	12.5 ⅞	4.0 ⅞	45.0 1 ⅞	10